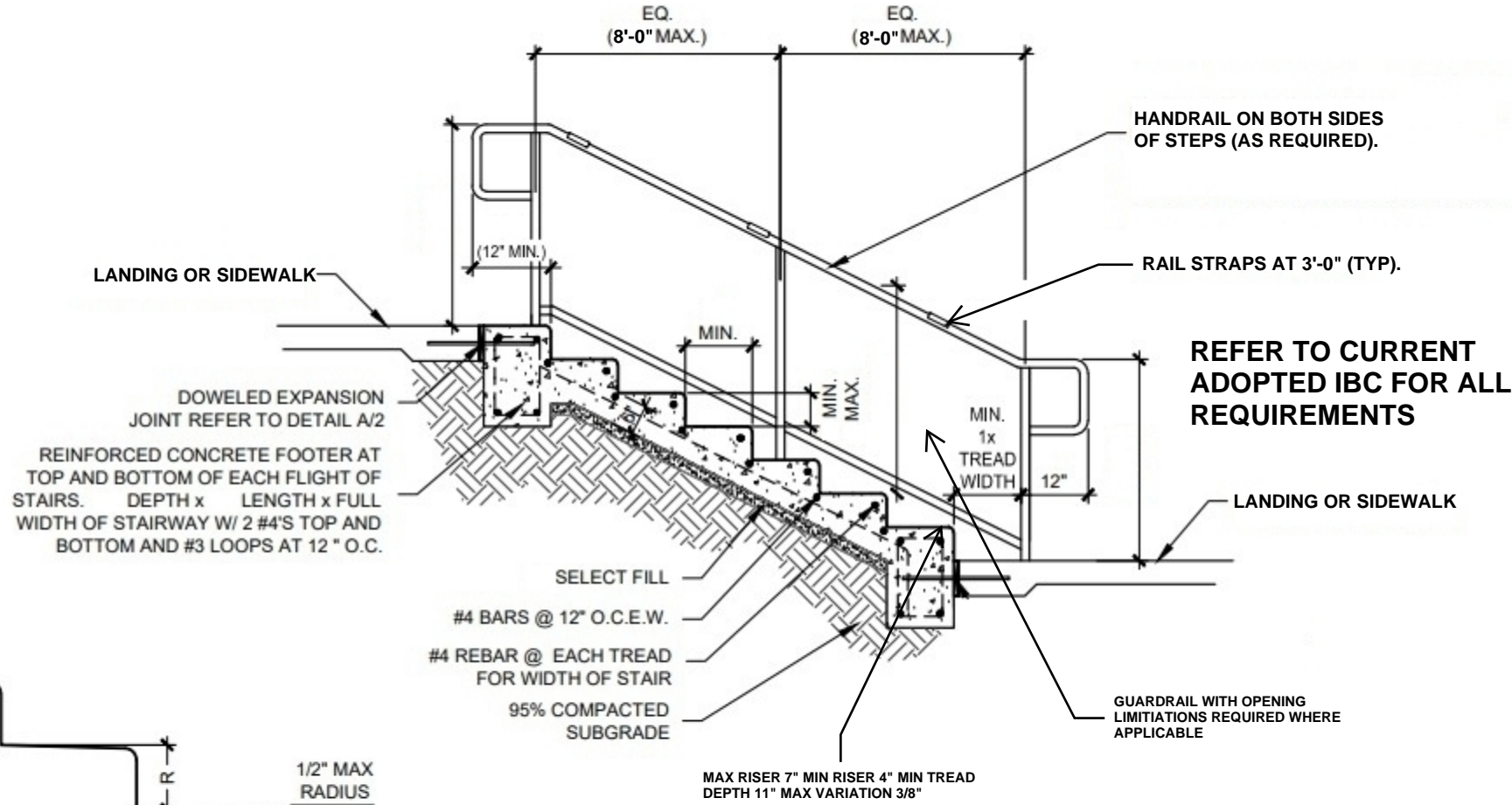


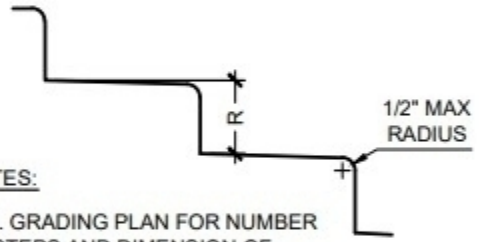
STAIR CONSTRUCTION REQUIREMENTS: CONCRETE



NOTES:

REF. GRADING PLAN FOR NUMBER OF STEPS AND DIMENSION OF TREADS AND RISER HEIGHT.

R = RISER HT. PLUS TREAD SLOPE



GENERAL NOTES:

1. REFER TO PLAN FOR STEP TREAD AND RISER QUANTITY AND DIMENSIONS.
2. SLOPE TREAD @ 1.0% MAX FOR DRAINAGE.
3. UNLESS NOTED OTHERWISE, STAIR FINISH SHALL BE NON-SLIP HORIZONTAL BROOM FINISH.
4. POSTS SHALL BE SURFACE MOUNTED, CORED, SLEEVED OR SET IN POST FOOTERS.